

# Immortalize your contribution

## DONATION LEVELS

\$2000 TO \$4999  
MANGO TREE LEVEL

\$5000 TO \$9999  
NEEM LEVEL

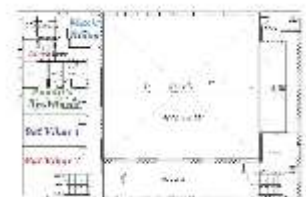
\$10000 TO \$49999  
PEEPAL TREE LEVEL

\$50000 TO \$99999  
BANYAN TREE LEVEL

\$100000 +  
GULAR TREE LEVEL

\*ALL DONATIONS ARE ELIGIBLE  
FOR CRA TAX CREDIT

# The New Radha Krishna Mandir & Cultural Centre



Our Donation & Memorial wall will be placed in the Mandir to commemorate the contributions of our community

**Our Memorial Wall** Donations to the memorial wall campaign are based on the total donations collected of an individual, family or organization from the beginning of our New Mandir Fundraising Campaign in 2016 upto opening day of the New Radha Krishna Mandir and Cultural Center (Fall 2021).

**Donation Levels** Our Donatation levels are based on 5 traditional trees used in common Puja and offerings; namely Mango, Neem, Peepal, Banyan and Gular trees. Each of these trees have both religious as well as ayurvedic significance; and are as essential to Orthodox Vedic worship, as your donations are to the realization of our new home.

Donate online today at  
[Radhakrishnamandir.ca](http://Radhakrishnamandir.ca)

or E-transfer to

[treasurer@radhakrishnamandir.ca](mailto:treasurer@radhakrishnamandir.ca)

SCAN HERE TO GO TO DONATION PAGE

